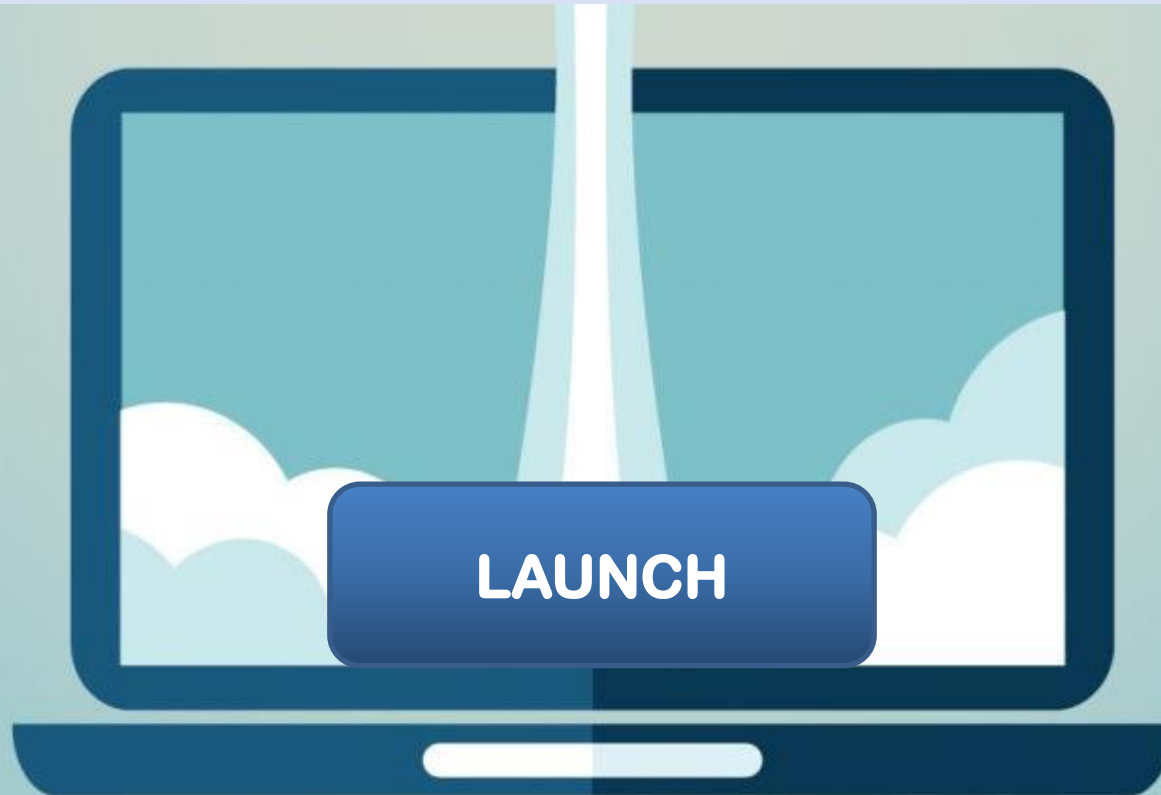




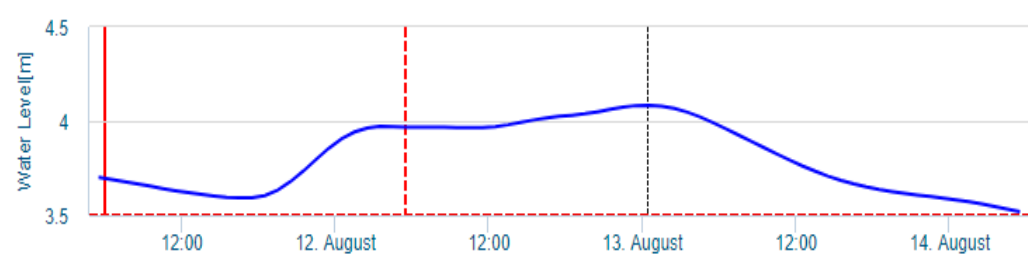
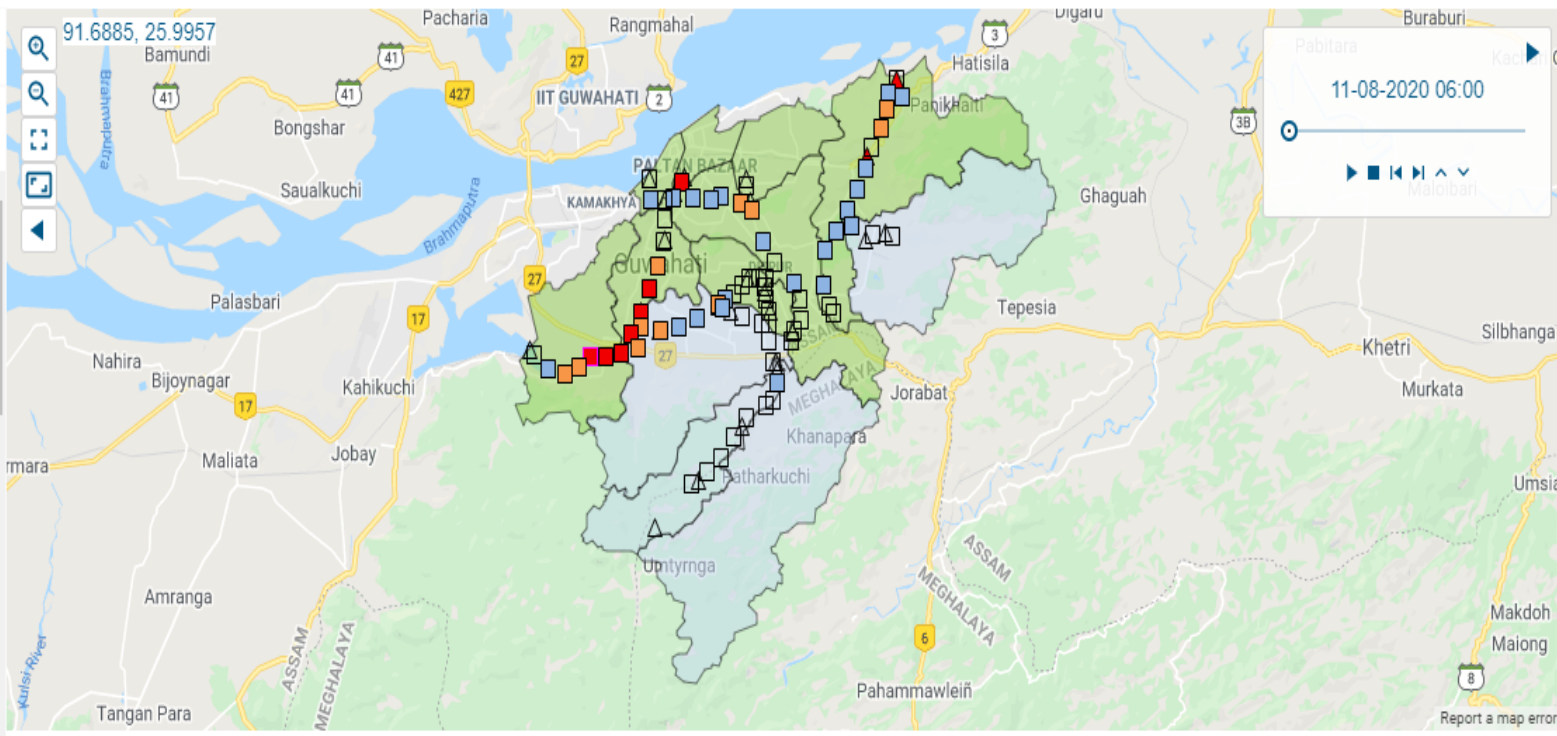
FLOOD EARLY WARNING SYSTEM FOR GUWAHATI

13TH AUGUST, 2020



Flood Early Warning System (FEWS)

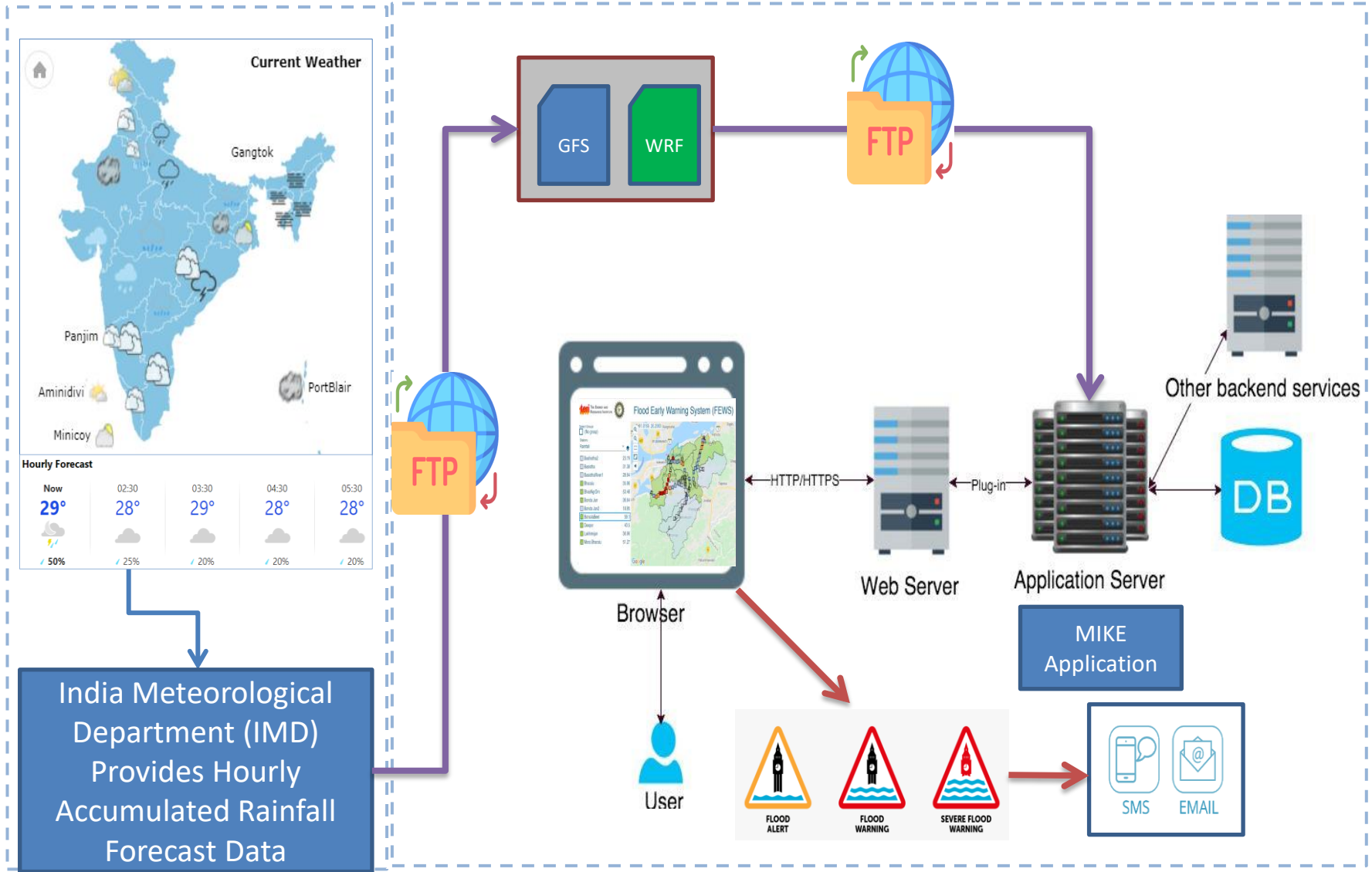
- Select Groups
 (No group)
- Stations
 WaterLevel
- Basistha River 1 - 10431... 23.21
 - Basistha River 1 - 11510... 16.77
 - Basistha River 1 - 12510... 14.82
 - Basistha River 1 - 13510... 11.8
 - Basistha River 1 - 14510... 9.34
 - Basistha River 1 - 15510... 6.64
 - Basistha River 1 - 16510... 5.32
 - Basistha River 1 - 18010... 4.8
 - Basistha River 1 - 19010... 4.31
 - Basistha River 1 - 20010... 4.21
 - Basistha River 1 - 21010... 4.15
 - Basistha River 1 - 22010... 4.08
 - Basistha River 1 - 23010... 3.98
 - Basistha River 1 - 24010... 3.82
 - Basistha River 1 - 25010... 3.7
 - Basistha River 1 - 26010... 3.41
 - Basistha River 1 - 27010... 3.13
 - Basistha River 1 - 28010... 2.65
 - Basistha River 1 - 29010... 1.49
 - Basistha River 1 - 4584... 180.25
 - Basistha River 1 - 5488... 160.0



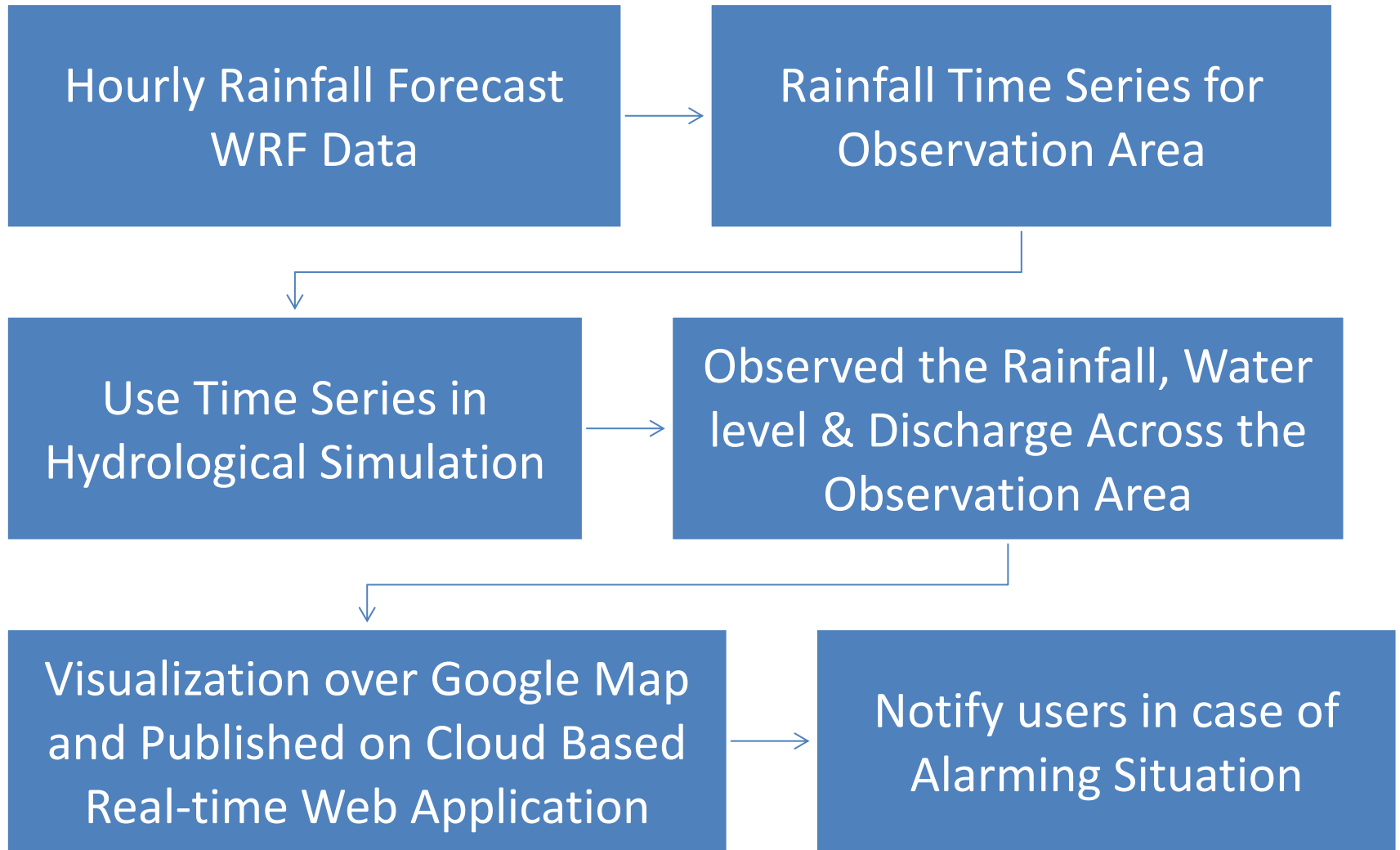
— Water Level (Basistha River 1 - 25010 - HPoint)



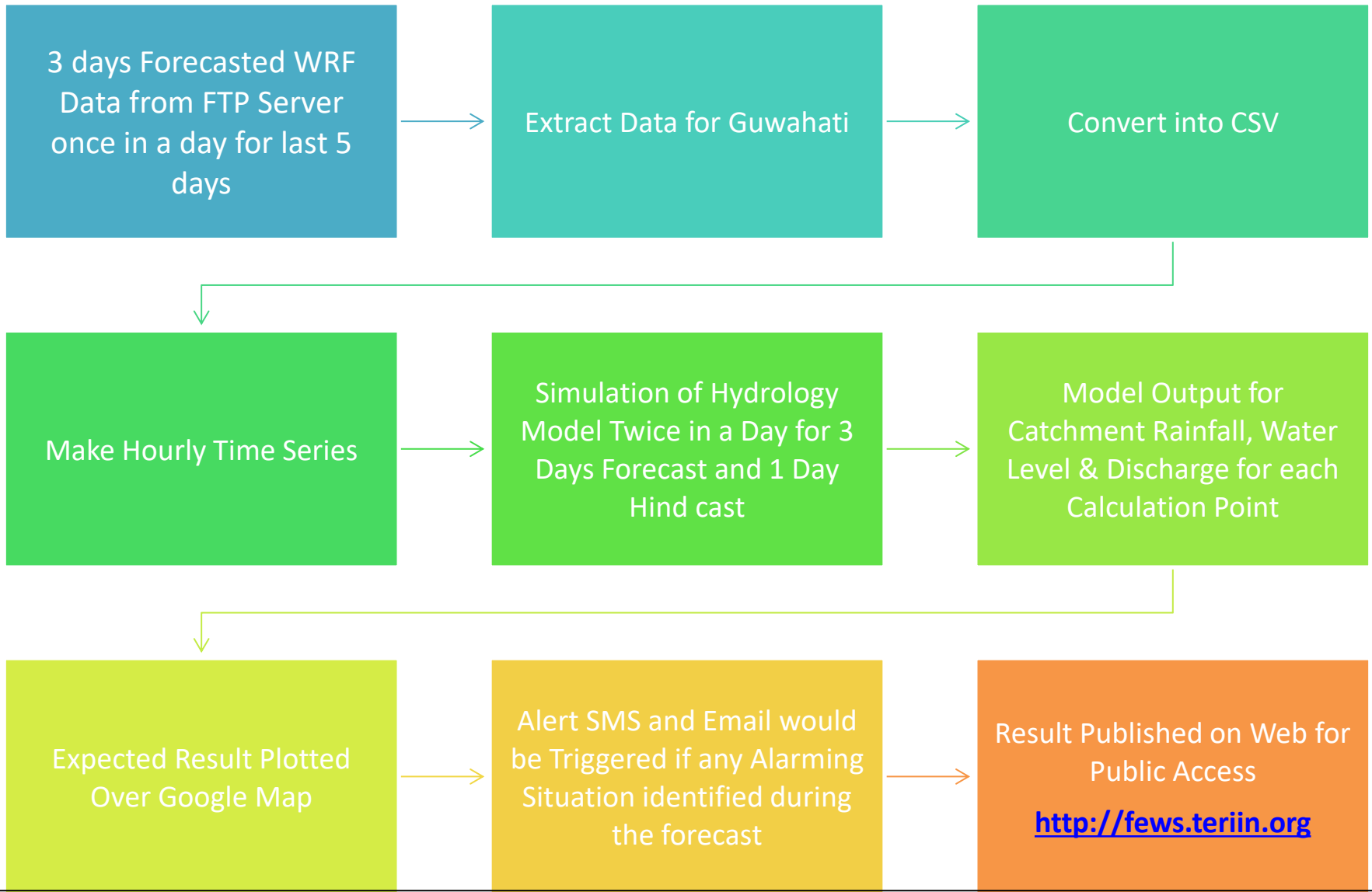
System Architecture



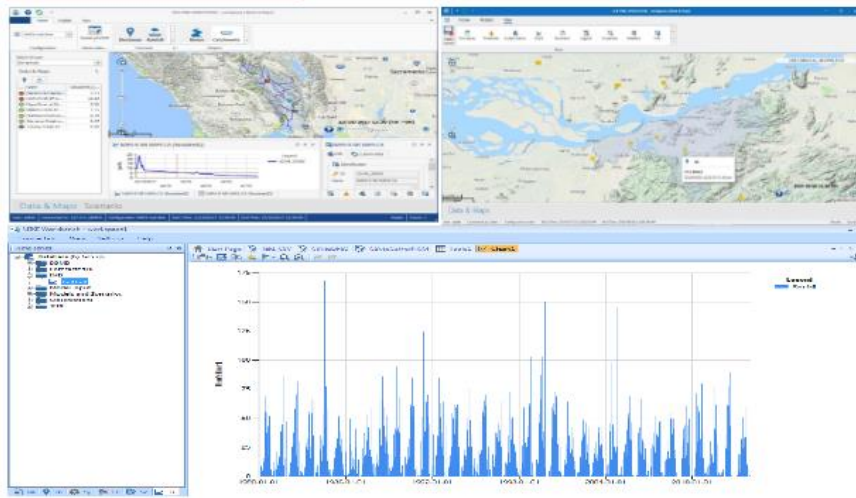
System Function



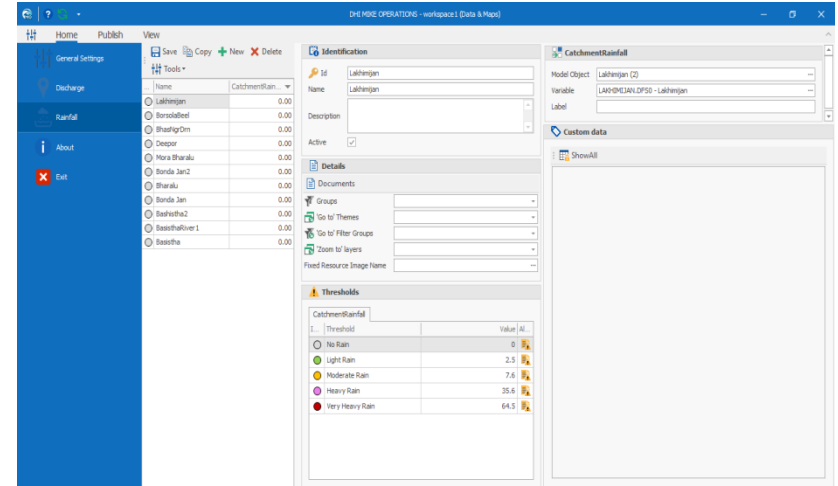
Data Processing



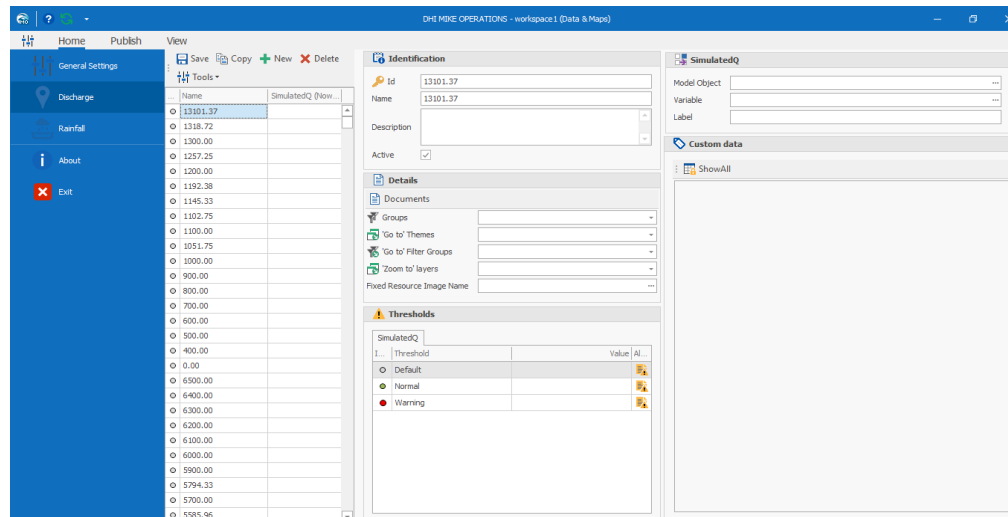
FEWS demonstration

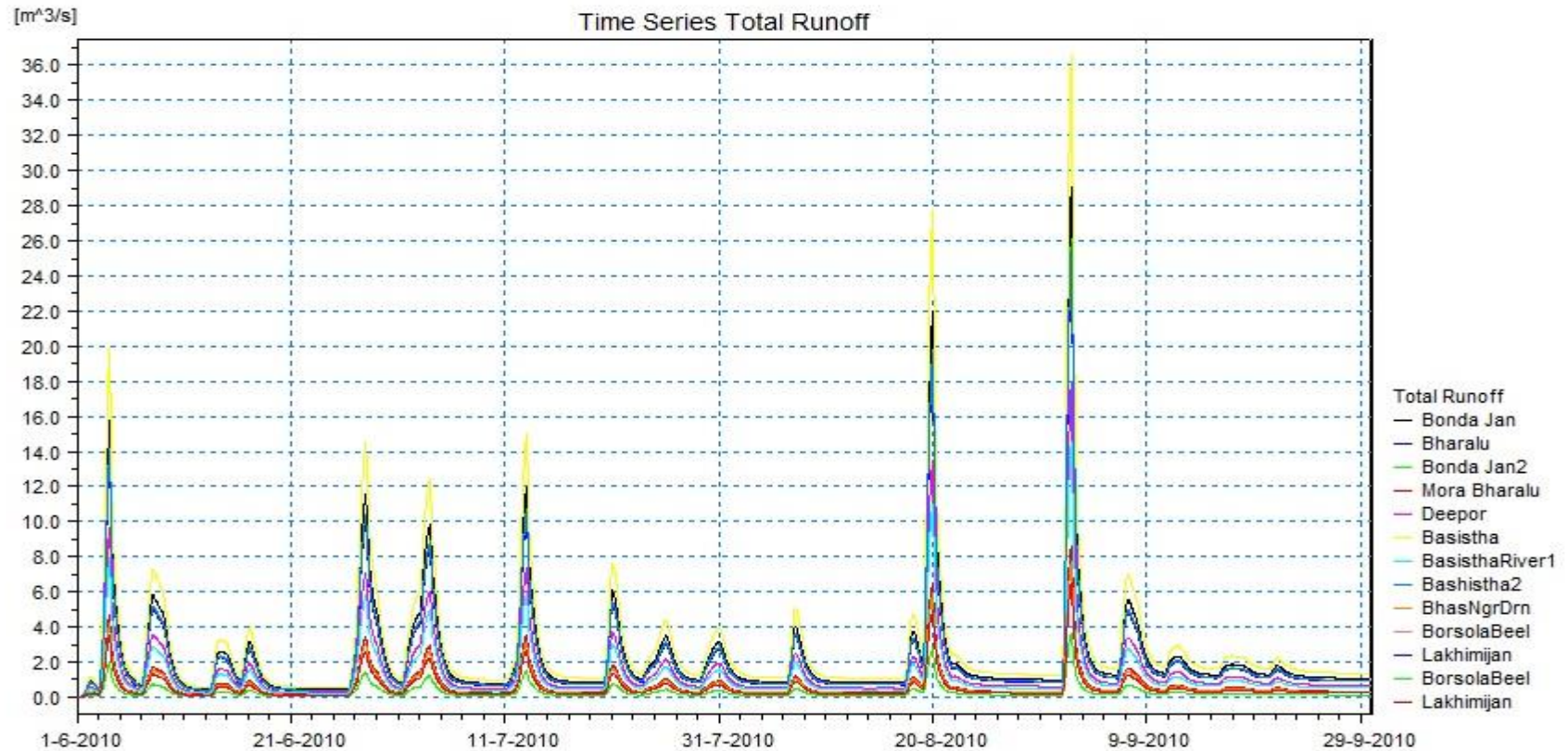
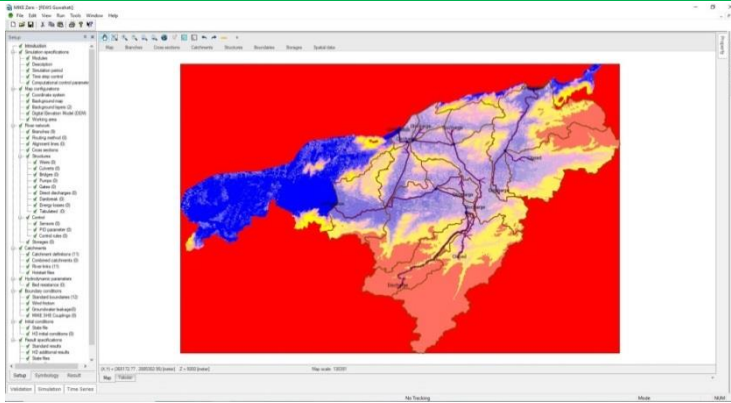


Flood Forecast Window



Rainfall Forecast Window

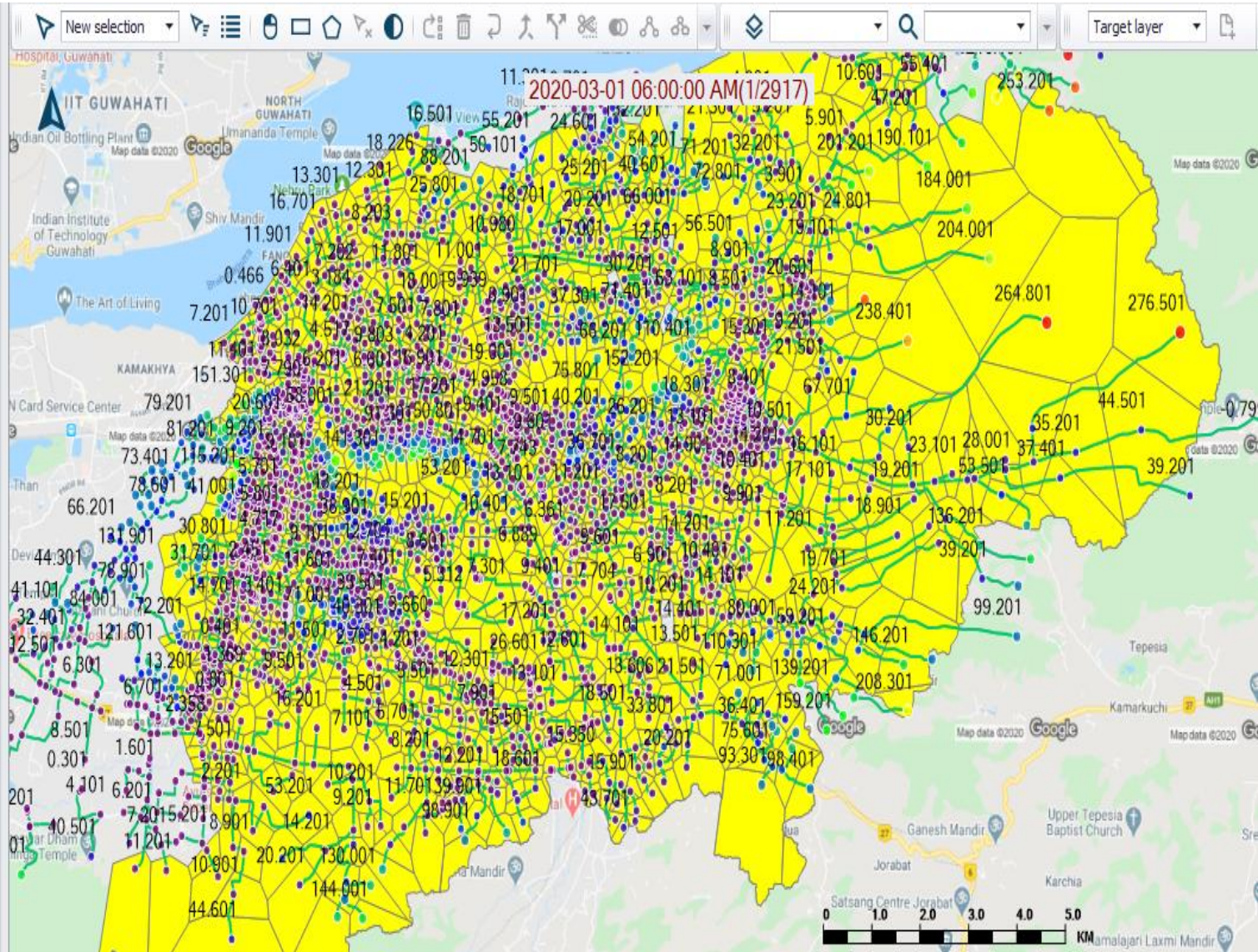






TERI_Urban_F_1_testBaseDefault_Network

- Nodes
 - Water level (Animation)
 - Unit: m
 - TS Value: Above 260.518
 - TS Value: 243.097 - 260.518
 - TS Value: 225.675 - 243.097
 - TS Value: 208.254 - 225.675
 - TS Value: 190.833 - 208.254
 - TS Value: 173.412 - 190.833
 - TS Value: 155.991 - 173.412
 - TS Value: 138.57 - 155.991
 - TS Value: 121.149 - 138.57
 - TS Value: 103.728 - 121.149
 - TS Value: 86.3066 - 103.728
 - TS Value: 68.8855 - 86.3066
 - TS Value: 51.4643 - 68.8855
 - TS Value: 34.0432 - 51.4643
 - TS Value: 16.6221 - 34.0432
 - TS Value: -0.799 - 16.6221
 - Flood (Animation)
 - Unit: m
 - TS Value: Above 8.6651
 - TS Value: 7.36749 - 8.6651
 - TS Value: 6.06988 - 7.36749
 - TS Value: 4.77228 - 6.06988
 - TS Value: 3.47467 - 4.77228
 - TS Value: 2.17706 - 3.47467
 - TS Value: 0.879458 - 2.17706

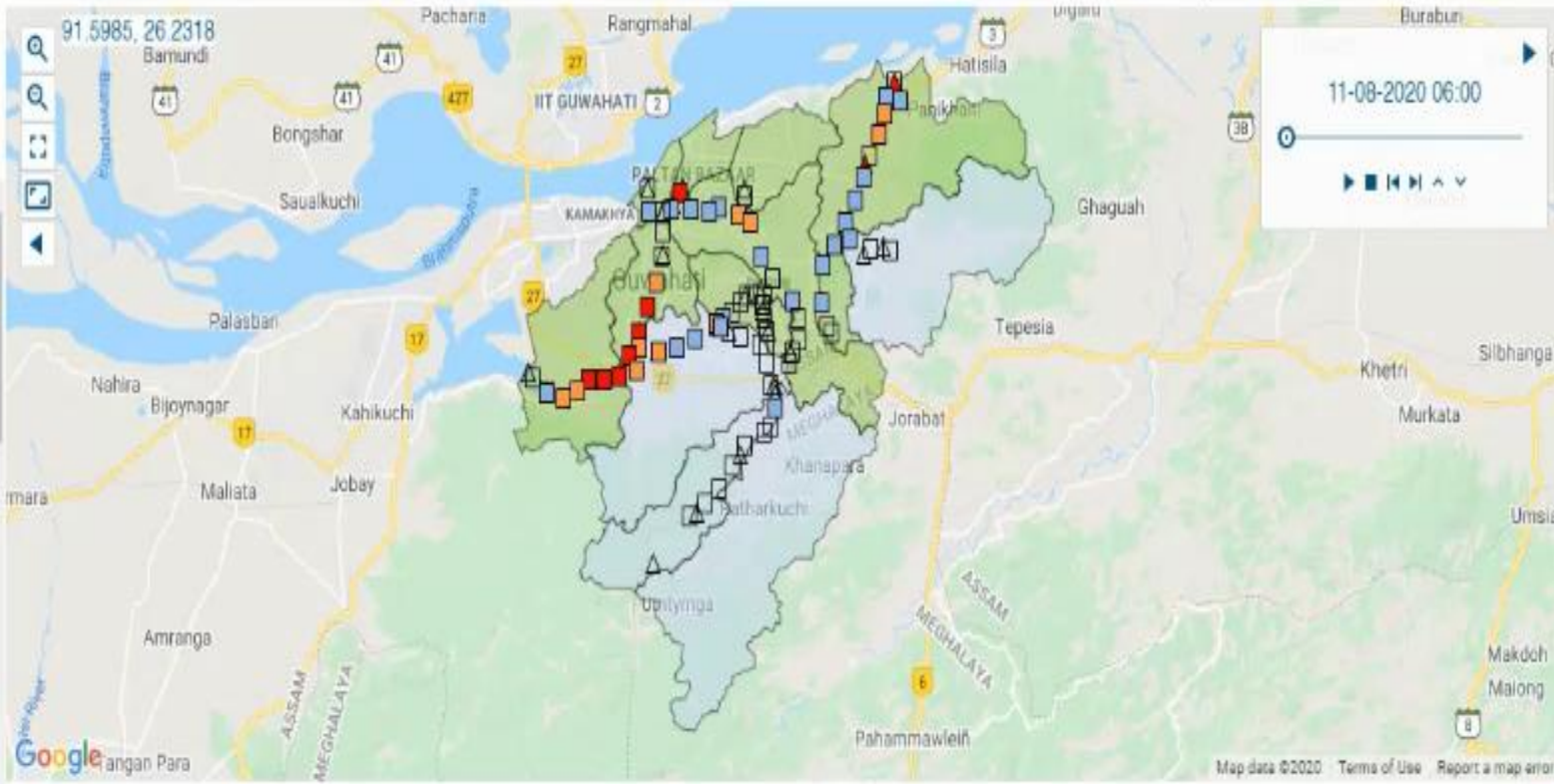




Flood Early Warning System (FEWS)

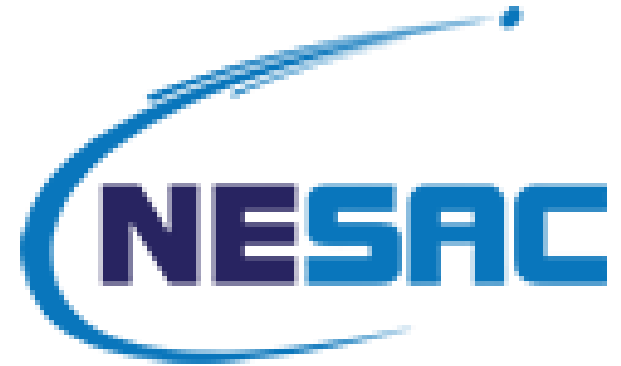
WaterLevel Discharge Forecast Rainfall Catchment Shapes Export csv / dts0 Observation Period

- Select Groups
 (No group)
- Stations
 WaterLevel
- Basistha River 1 - 10431 ... 23.21
 - Basistha River 1 - 11510 ... 16.77
 - Basistha River 1 - 12510 ... 14.82
 - Basistha River 1 - 13510 ... 11.8
 - Basistha River 1 - 14510 ... 9.34
 - Basistha River 1 - 15510 ... 6.64
 - Basistha River 1 - 16510 ... 5.32
 - Basistha River 1 - 18010 ... 4.8
 - Basistha River 1 - 19010 ... 4.31
 - Basistha River 1 - 20010 ... 4.21
 - Basistha River 1 - 21010 ... 4.15
 - Basistha River 1 - 22010 ... 4.08
 - Basistha River 1 - 23010 ... 3.98
 - Basistha River 1 - 24010 ... 3.82
 - Basistha River 1 - 25010 ... 3.7
 - Basistha River 1 - 26010 ... 3.41
 - Basistha River 1 - 27010 ... 3.13
 - Basistha River 1 - 28010 ... 2.65
 - Basistha River 1 - 29010 ... 1.49
 - Basistha River 1 - 4584 ... 180.25
 - Basistha River 1 - 5488 ... 162.2





Research Collaboration



teri



<http://fews.teriin.org>