

INTRODUCTION TO

About TERI

- Established in 1974 with offices in India, USA, Africa, Japan, London, Antwerp
- On ground work in India, Africa, Middle East, South East Asia
- Areas of work:
 - **Climate change**
 - **Environment**
 - **Energy and Resource efficiency**
 - **Waste management**
 - **Sustainable development**
- Thought leadership with “know how to show how”

Research
at the core of
what we do,
leading to



Technology Products

Technology development pilots in energy, resource efficiency, environment and waste management



Policy Advisory & Outreach

Provide platforms for Engagement & outreach with policy-makers, academics, corporates and industry



Advisory Services

Advisory & consultancy on strategy development and implementation for corporates

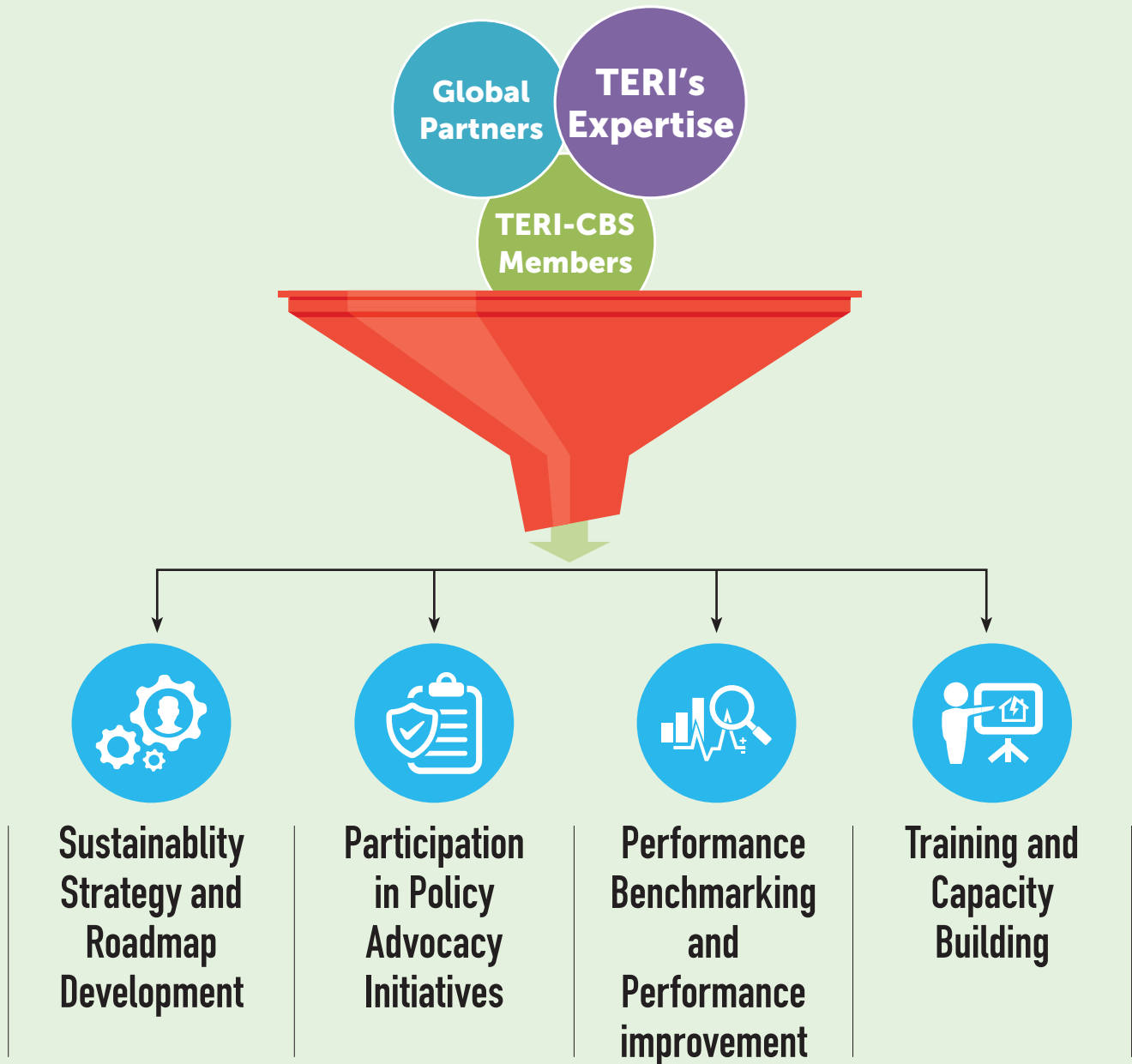
About TERI Council for Business Sustainability

- A company membership organisation housed within TERI
- In existence since 2001
- Member companies include:
 - Public and private sector, including MNCs
 - Various industry sectors, sizes and geographies
- Governed by an Executive Committee from member companies
- Agenda funded and driven by members

TO KNOW MORE SCAN



Services to Individual Companies*



*Discounts available for TERI CBS Members

TO KNOW MORE SCAN



Model & Terms of Membership

Item	Details
Governance	CEOs of member companies by invitation and referral
Member participation	<ul style="list-style-type: none"> • CEO • Chief Sustainability Officers • Domain experts
Term of membership	3 years
Types of membership	Silver Gold
Membership fee	Silver: ₹10 lakhs Gold : ₹20 lakhs
Benefits of membership	<ul style="list-style-type: none"> • Technical support • Networking opportunities • Branding and recognition opportunities • Access to TERI's products and facilities

Membership Benefits – Summary

All Members



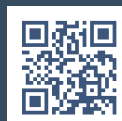
- **2 person-days complimentary** consulting support **annually**
- **10% discount** on paid consulting services
- **Membership** of Director's Forum on Sustainability and Chief Sustainability Officers' (CSO) Forums
- **Complimentary** participation of CEO in TERI's flagship WSDS
- **Participation** in programmes of bilateral agencies (Dutch, British, Norwegian) to explore sustainability business options
- **Participation** in pilots, working groups, policy dialogues
- **Showcase company's logo and practices** in TERI website, publications etc.

Additional benefits for Gold members



- **Complimentary assessment** of the sustainability report
- **Leadership roles** in pilots, working groups, policy dialogues
- **Complimentary participation** of 2 officials in flagship events
- **Speaking opportunities** at WSDS, MDPs
- **Discounts** on TERI facilities (golf course, cricket ground) and organic products
- **Complimentary** access to TERI-hosted World Digital Library on Sustainable Development.

TO KNOW MORE SCAN



Planned Engagements with Member Companies



**Thought Leadership Webinar Series
for Indian Companies**



**TERI CBS Knowledge articles
and blogs**



TERI CBS Thought Leadership Reports



**Meetings of TERI CBS Chief
Sustainability Officers' (CSO) Forum**



**Meetings of TERI CBS Director's
Forum on Sustainability**



**Platforms to engage with policy makers and
drive innovation in research, technology**



Annual Summits and Events

