



THE ENERGY AND
RESOURCES INSTITUTE

Creating Innovative Solutions for a Sustainable Future



SOCIAL TRANSFORMATION AND CSR DIVISION

THE BEST WAY TO PREDICT THE FUTURE IS TO CREATE IT



The genesis of Social Transformation & CSR Division's activities lies in its firm belief that sustainable use of natural resources, efficient utilization of energy, large-scale adoption of renewable energy technologies, and reduction of all forms of waste would move the process of development towards the goal of sustainability.



Key GOALS

Women
Empowerment

At TERI, A gender-based approach is followed to aid reduction in inequalities

Global targets and goals is the key driver of TERI's interventions to provide sustainable solutions

Achieving
SDGs

Climate
Resilient
Infrastructure

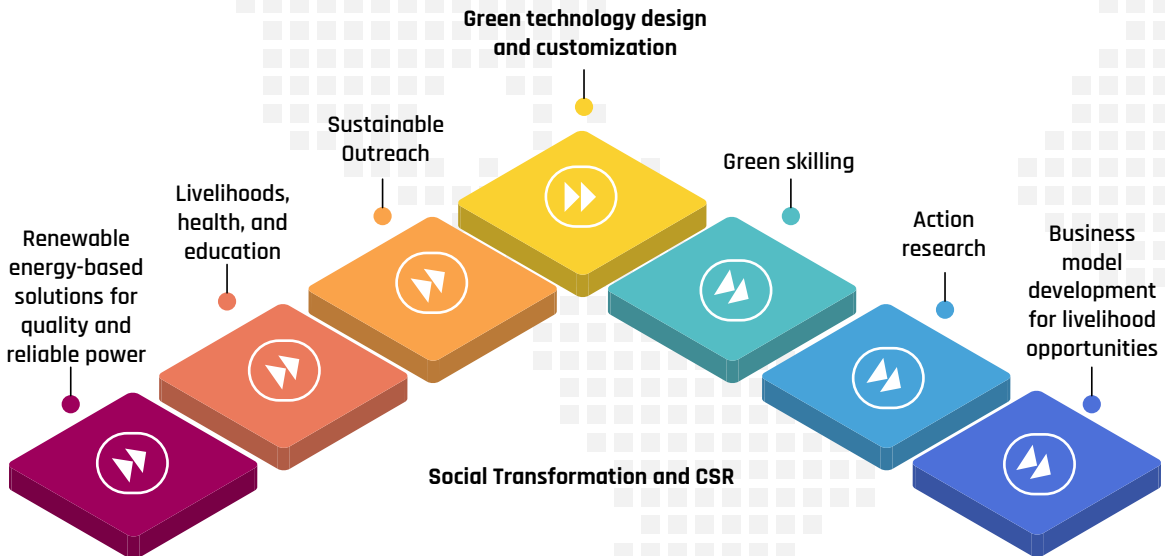
With increased nuances of natural disasters due to climate change, TERI aims to develop resilient tomorrow

TERI's interventions help reduce carbon footprint to achieve Net Zero Target

Carbon
Abatement

Core STRATEGIES

- ▶▶ Baseline studies, Impact assessment
- ▶▶ Carbon assessment and ESG studies
- ▶▶ Development of Model Villages for low carbon pathways
- ▶▶ Environment Education
- ▶▶ Gender Inclusion and Social assessments
- ▶▶ Implementation of CSR activities
- ▶▶ Integrated Rural & Community Development
- ▶▶ Just transition and sustainable development
- ▶▶ Policy Advocacy
- ▶▶ Publications and outreach



Sustainable **Solutions Promoted**

Thematic Area	Innovative Technologies
Agriculture	<ul style="list-style-type: none"> • Solar Irrigation • Solar Fish Dryer • Solar Cold Storage • Vegetable Cooler
Education	<ul style="list-style-type: none"> • School Trainings and Mid-Day Meal Kitchens • Potable Drinking Water Solutions for School
Entrepreneurship	<ul style="list-style-type: none"> • Women Energy Entrepreneurship
Energy Access for Livelihood Promotion	<ul style="list-style-type: none"> • Hybrid Solar Charging Units • Solar DC Loom • Battery Powered Boat • Solar Rope Machine
Health	<ul style="list-style-type: none"> • Solar Plant for Primary and Secondary Health Centre • WASH Infrastructure
Household Energy	<ul style="list-style-type: none"> • Integrated Domestic Energy System (IDES)
Lighting	<ul style="list-style-type: none"> • Solar High Mast Lights • Solar Street Lights
Natural Resource Management	<ul style="list-style-type: none"> • Greening & Restoration of Habitats • Water Body Rejuvenation
Research and Development	<ul style="list-style-type: none"> • Customized RE Technologies • Baseline and Impact Assessment • Policy Advocacy • Training & Capacity Building Program
Transportation	<ul style="list-style-type: none"> • Solar EV Stations

SDGs
Targeted



Glimpses of **our work**

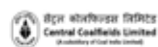


Key **Partners**



TATA STEEL

IKEA IKEA Foundation



Awards and Recognitions

- **Coal India Project received**
 - » Best CSR Initiative awarded by IIT and Department of Public Enterprises (DPE) in 2017
 - » Best CSR Project in Rural Development category in 2019 by CSR Box and Dalmia Cement Ltd
 - » Award for Best Swacchata Project in 2018 by District Administration Purulia, Govt of West Bengal
 - » Mahatma Award for Best CSR Project in the Environment category
- **CONCOR Project received the best CSR Project by-**
 - » Indo French Award in 2019
 - » Woodpecker Award 2015
- Power Finance Corporation CSR project was awarded by MCA
- "National Award for Best Overall Excellence in CSR and Sustainability" from ET Ascent.
- "Dedication Excellence Award in Sustainability Programme Development - South Asia" in the Corporate Social Responsibility Awards 2022 from Acquisition International



Contact information

Dr. Amit Kumar Thakur, PhD

Associate Director & Head CSR,
Social Transformation & CSR Division
The Energy & Resources Institute (TERI),
IHC Complex, Lodhi Road,
New Delhi 110 003
Email: akthakur@teri.res.in
Tel: 011 24682100 Extn:2260
Mobile:9811990879



Scan for more information



<https://twitter.com/teriin>



www.linkedin.com/company/teriin



<https://www.instagram.com/teriindia>



<https://www.facebook.com/TERIIN>

