

inputs are provided for watershed planning through a scientifically developed Land Resource Inventory. The project activities aim to provide an effective monitoring and learning framework to ensure learning and documentation through a participatory approach, and effectively use the same for improving project implementation and thereby achieving the project development objectives.

Centre for Rural Action (CFRA)

The Centre for Rural Action facilitates cost-effective clean energy solutions for households & home-based businesses/micro-enterprises in rural areas of the country. CFRA works to share this knowledge with target populations through training and capacity building while working with communities to create solutions that best suit their needs under TERI’s ‘Lighting a Billion Lives’ programme. These initiatives target rural household needs, literacy, income generation, and reduction of household air pollution. This programme operates on an entrepreneurial model of energy service delivery to facilitate last mile clean energy access through commercially viable and socially relevant value chains. Further, the innovative blended funding model is adaptable to different levels of affordability, mobilizing connections between users and microfinance partners, rural development banks, self-help groups and corporate sponsors. For instance, TERI worked with the women-led SHG Federations of JEEVIKA-Bihar and disseminated more than 50,000 Integrated domestic energy systems (solar home system and forced draft biomass cookstoves) using this blended funding model.



KEY PROJECT

**Solar power for Looms in Varanasi:** Banarasi Sarees have been woven in Varanasi for centuries. The shift to power looms has modernized the craft, but these looms require reliable energy. TERI with support from Indus Towers engineered an innovative solution to power shortages. By installing a hybrid solar energy system at a subsidized cost, these weavers are experiencing change: power supply certainty for production, efficient work hour management, consistent production quality, cleaner local environment, and higher income.

Over **5.76 Million** Lives **Impacted**

**1152725** Households **Illuminated**

**175070+** Solar Lanterns

**58951+** Integrated Domestic Energy Systems

**36,366+** Solar Micro Grid Connections

**18700+** Solar Home Systems

**92,990+** Improved Cook Stoves

**4237+** Villages **Lit Up**

**3,200+** Green Jobs **Created**

**24** States **Covered**

**12** Countries Across **Africa & Asia**

As on 31 December 2019    [labl.teriin.org](http://labl.teriin.org)

Major Partners

Ministry of New and Renewable Energy, Ministry of Environment, Forest and Climate Change-ENVIS, Ministry of Power, Ministry of Rural Development, Government of India, Central Silk Board, DFID/UKAid, The World Bank, GIZ, ENERGIA, CTCN, Asian Development Bank, Swiss Agency for Development and Cooperation, Shakti Sustainable Energy Foundation, Indus Towers, Signify Innovations, Power Finance Corporation, Agricultural Insurance Corporation, REC Limited, and various State Governments in India



CONTACT DETAILS  
Rural Energy and Livelihoods Division, TERI

Director: Dr Debajit Palit  
E:mail: debajitp@teri.res.in

TERI, Darbari Seth Block, IHC Complex, Lodhi Road, New Delhi – 110 003, INDIA  
Tel:(+9111) 2468 2100 and 2468 2111, Fax (+91 11) 2468 2144 and 2468 2145



RURAL ENERGY AND LIVELIHOODS





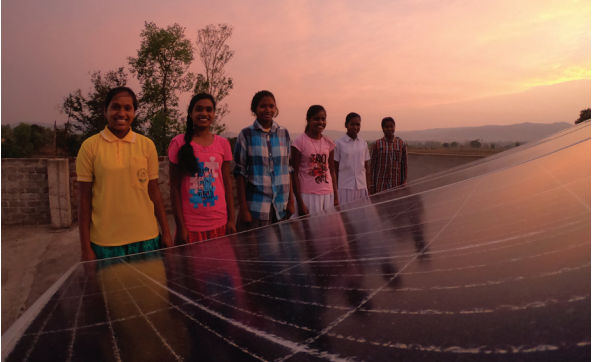
Rural Energy and Livelihoods Division

In a developing country such as India, inclusive growth is intrinsically linked to rural development, with energy playing a critical role. With ‘sustainable energy’ as a pivotal theme, the Rural Energy and Livelihoods Division in TERI aims to address key challenges that inhibit energy provisioning in developing countries, including:

- Affordable and reliable clean energy solutions through innovative and replicable technologies and institutional models
- ‘Energy’ as a driver of development indicators, such as health, education, livelihoods, and gender & social inclusion

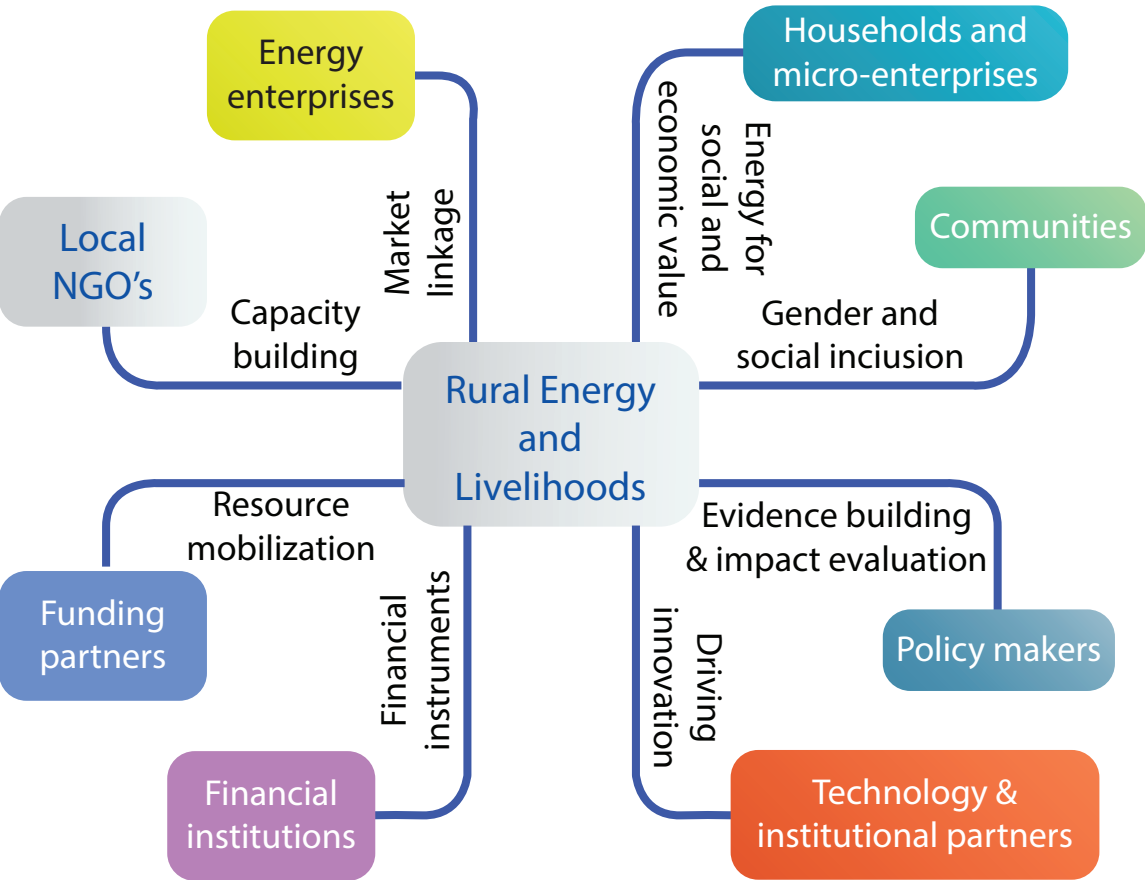
To achieve this, the division focusses on the following areas

- Accelerating energy access through research and implementation of lighting and clean cooking projects
- Promoting renewable energy for livelihoods through technology and business model innovation for solar looms, cold storage, micro irrigation, among others.
- Mainstreaming gender and social inclusion in energy programmes by creating evidence for better informed policy making
- Facilitating rural energy access, community development, and watershed management through monitoring and evaluation, learning, knowledge sharing, and leading the discourse



THEMES

Clean energy access | Decentralized renewable energy | Microgrids | Energy for livelihoods  
| Gender and social inclusion | Rural infrastructure



Centre for Impact Evaluation and Energy Access (CIEEA), Delhi

The CIEEA team at Delhi works to study the interlinkages of technology, society and development on themes of energy, gender, social inclusion and livelihoods through research and analysis, technology need assessments, market studies, socio-economic surveys ,and impact evaluation. In the past year, CIEEA has worked on research projects spanning issues of energy access, electricity pricing, clean cooking, gender inclusion, replacement of fossil fuel subsidies and health impacts of household air pollution. The team brings a diverse set of expertise with experience in areas of project management, qualitative and quantitative research and analysis, gender concepts, econometrics, big data analytics, renewable energy engineering and management and communications.

KEY PROJECT

Exploring Factors that Enhance (or restrict) Women’s Empowerment through Electricity:

This research study on gender and energy in partnership with ENERGIA strove to account for the various factors that enhance and restrict women’s opportunities and empowerment through electrification, both as the users of electricity services and as actors in the provision of electricity. This relationship was studied across India, Kenya and Nepal. The study examined how the provision of electricity affects gender equality through the distribution of benefits for women, men, girls and boys – and what role do policies and other conditional factors play in this picture.

For details visit [www.efewee.org](http://www.efewee.org)

Centre for Impact Evaluation and Energy Access (CIEEA), Bangalore

This Centre is mandated to direct efforts in carrying out research, monitoring, evaluation, learning, documentation, impact assessment, implementation, and providing knowledge support in areas such as rural energy technologies, natural resources management, and livelihoods, across rural and urban geographies.

KEY PROJECT

CIEEAB is providing Monitoring, Evaluation, Learning and Documentation (MELD)

services to the World Bank assisted Karnataka Watershed Development Project (Sujala) across nine districts in the state of Karnataka with the support of Watershed Development Department, Govt. of Karnataka. This is a pioneering, international award winning project, where specific farmer level