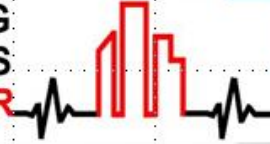




**BUILDING
FITNESS
INDICATOR**



- WEBINAR ON -

BUILDING FITNESS INDICATOR

A SOCIAL INITIATIVE OF GRIHA COUNCIL

APRIL 28, 2020 - WORLD DAY FOR SAFETY AND HEALTH AT WORK

11:00 AM TO 12:00 PM

Opening remarks:
Mr. Sanjay Seth
CEO, GRIHA Council



Speakers:
Ar. Shaily Mahera & Er. Gautam Aswani



Content



✓ Introduction

✓ Summary

✓ Process

✓ Overall Intent

✓ Categories and
Sub-Categories

✓ Online tool

✓ Q & A



INTRODUCTION

Building Fitness Indicator (BFI)



- **Self-assessment tool** for organizations to measure preparedness of workplaces for workforces to prevent the exposure to COVID-19.
- **Not** a rating or certification or standard.
- Guidance based on the standard practices followed across the globe (*like WHO*) and in the country (*MoHFW and ISHRAE*)
- **The guidance provided is advisory in nature and informational in content.**

BFI- The Idea....

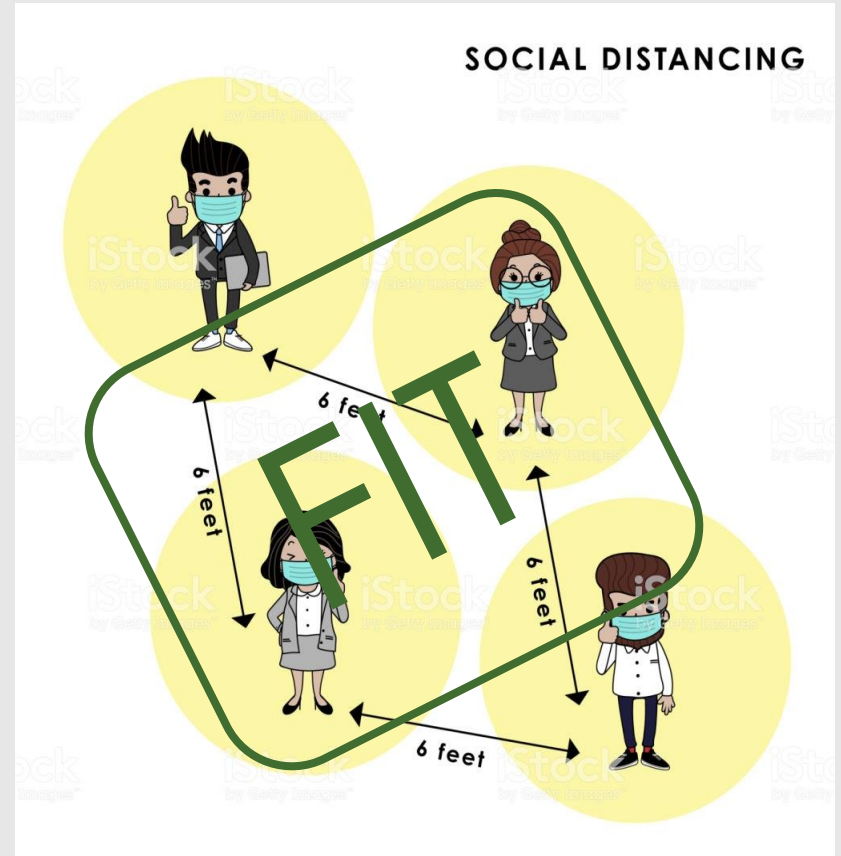


<https://blogs.chapman.edu/wilkinson/2020/03/20/panic-in-the-time-of-pandemic/>

BFI- The Idea....

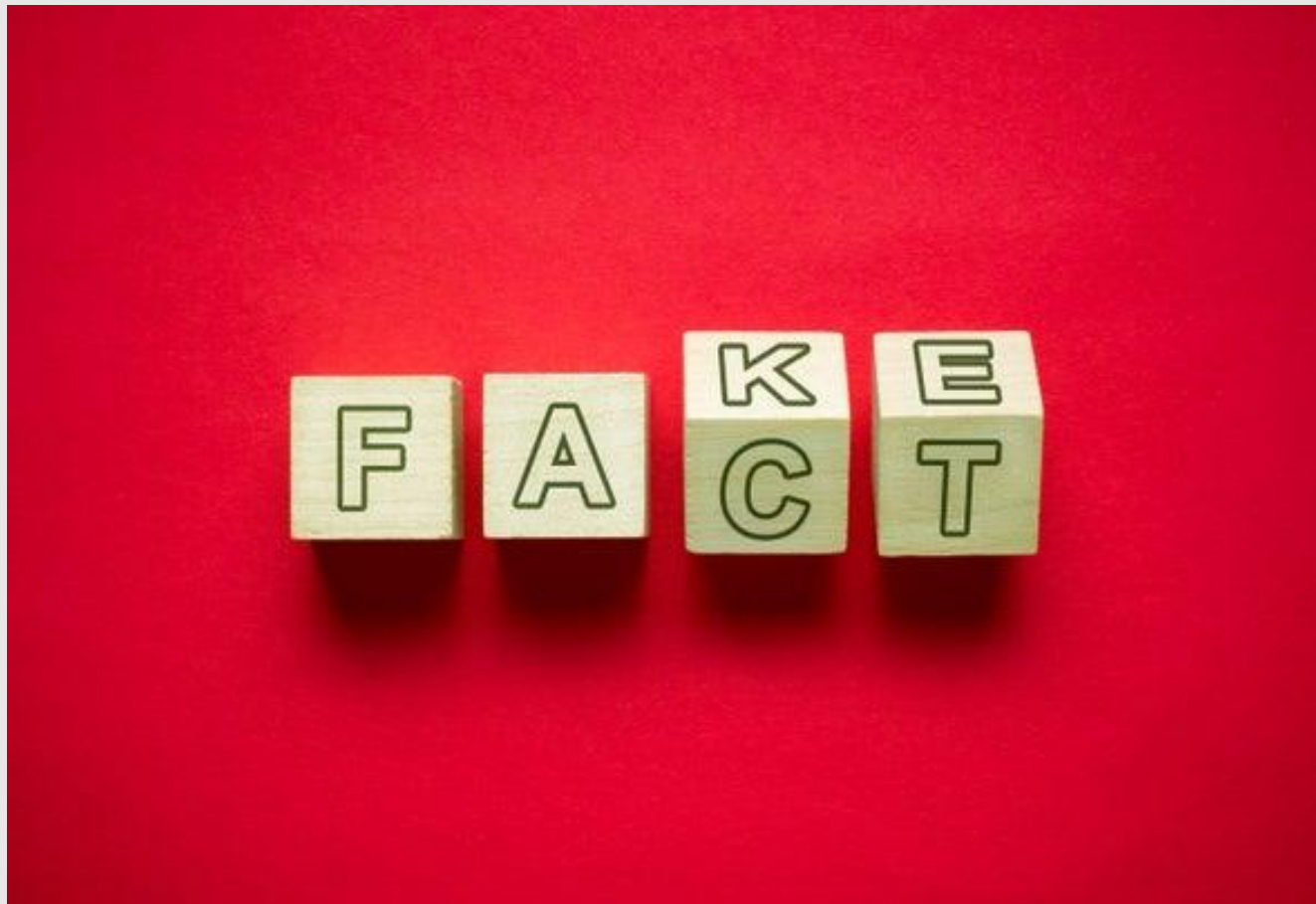


<https://www.pngwave.com/png-clip-art-gcgzd>



<https://www.istockphoto.com/>

BFI- The Idea....



<https://www.scientificamerican.com/article/fake-news-websites-may-not-have-a-major-effect-on-elections/>

BFI- The Idea....



Guidelines- 3 major parameters



Strengthening the cleaning protocols

Cleaning protocols to take into account the guidelines given by WHO in the current situation of pandemic. *(Reference given in the last slide)*

Hygiene

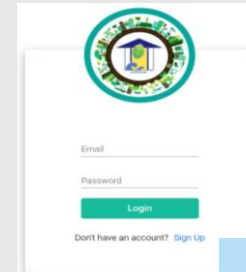
Sanitizing the air and surfaces to breakdown the protein surface of the virus.

Creating awareness

Organizing awareness programs and installing educational handwashing signages.

PROCESS

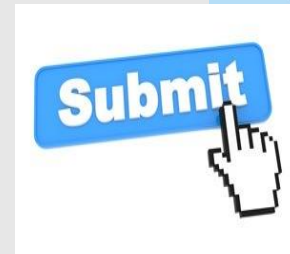
1 Registration



2 Checklist



3 Submission



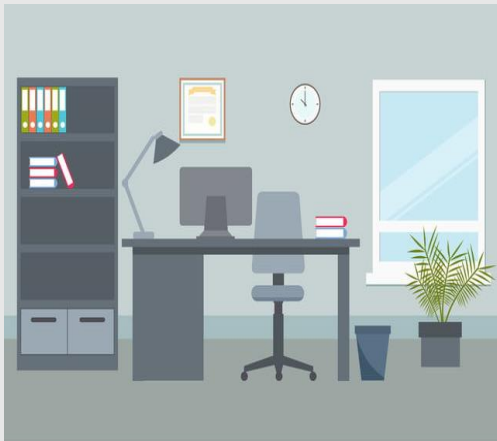
4 Report generation



**CATEGORIES
&
SUB-CATEGORIES**

Categories

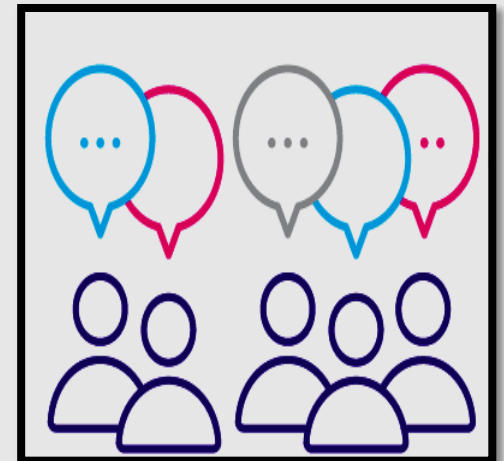
Workplace



Workforce



Awareness



**Checklist 1:
Workplace**

**Checklist 2:
Workforce**

**Checklist 3:
Awareness**

Sub-Categories

1. Policy

2. Social Distancing

3. Hygiene

Checklist 1: Workplace

Guidelines
by local
authorities



Policy

5

Things to do

Control the
spread
post
pandemic



Screening
people



Waste
Management



Social distancing

Checklist 1: Workplace

Social Distancing

6

Things to do

Reception guarded at min. 1 meter



Water dispensers



Workstation rearranged



Dining space



Isolation room for symptomatic



Floor markings

Checklist 1: Workplace

Spaces

People

Items

Waste Management



**Hygiene
(cleanliness)**

Checklist 1: Workplace

Spaces

People

Items

Waste Management



Checklist 1: Workplace

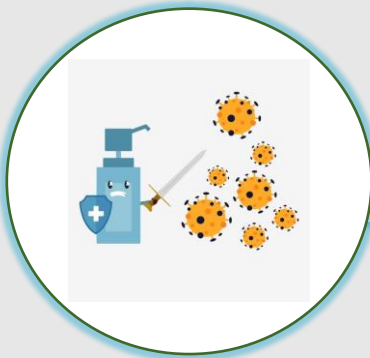
Spaces

People

Items

Waste Management

Provision
of hand
sanitizers



**Hygiene
(cleanliness)**

3

Things to do



Foreign
items
to be
sanitized



Provision of PPE

Checklist 1: Workplace

Spaces

People

Items

Waste Management

Hygiene (cleanliness)

6

Things to do

Provision
of covered
multi-colour
bins



Disinfecting
cleaning
equipment



Disposable
bags in bins



Disposal of
waste



Use Dustbin

Placement
of bins



Collection
space for waste

Checklist 1: Workplace



Checklist 2: Workforce



Checklist 2: Workforce



Training of employees for social distancing

Checklist 2: Workforce

Hygiene

5

Things to do

PPE for symptomatic staff



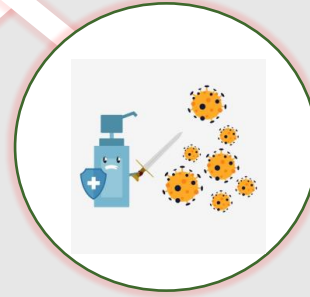
Thermal Screening of visitors



PPE for housekeeping staff



Sanitizers for visitors



Health check-up for housekeeping staff



Checklist 3: Awareness



Information dissemination

Policy

2

Things to do



Addressing queries of visitors

Checklist 3: Awareness



Signage for social distancing and hygiene

Social distancing & Hygiene 2

Things to do



Timely alerts

Summary

Categories	Sub-Categories				Result
	Policy	Social distancing	Hygiene		
Workplace	5	6	13	4	28
Workforce	3	1	5		9
Awareness	2	3			5
					42



Recommendations

Checklist	Answer
Example: Are alcohol based hand sanitizers provided at all common areas?	Yes No
<p>Why is it recommended: MoHFW suggests that easy accessibility of hand sanitizers at all common areas would encourage the use of sanitizers and reduce the chances of germ spread through dirty hands.</p> <p>Recommendation: Keep alcohol based hand sanitizers in all common areas, all the entry areas and near all high contact surfaces so that ease of accessibility will encourage frequent sanitising which will eventually help in reducing the spread of germs.</p> <p>Reference: https://www.mohfw.gov.in/pdf/Guidelinesondisinfectionofcommonpublicplacesincludingoffices.pdf</p>	



Overall Intent

- **Boost the confidence of the occupants that the building is safe and fit to occupy in the current situation of pandemic.**
- Enhance the health and well being of the occupants.
- Enhance productivity and business processes.

Online Tool